

REF.NO	DESCRIPTION
1	BASE
2	EXCITER BOLT
3	RUBBER MOUNTING
4	EXCITER MOUNTING PLATE
5	EXCITER CLAMP
6	EXCITER PULLEY
7	CIRCLIP (A24)
8	UNBALANCE WEIGHT
9	OIL SEAL (Ø35*Ø52*7)
10	ROTOR HOUSING COVER
11	BEARING (NJ 306E C3)
12	ROTOR HOUSING
13	BUSH
14	EXCITER SHAFT
15	KEY
16	ROTOR HOUSING COVER
17	PULLEY COVER
18	V-BELT A-28
19	ENGINE CLAMP
20	ENGINE MOUNTING PLATE
21	CLUTCH PULLEY
22	HADLE STOPPER
23	HANDLE BUSH
24	HANDLE

CROMMELINSTM MACHINERY

VIBRATORY PLATE COMPACTOR MODEL – CC70R

OPERATION & INSTRUCTION MANUAL

Thank you for your selection of CROMMELINS plate compactor.

This Operation Manual explains its use, installation, checking and maintenance. "CROMMELINS" suggests that you retain this manual for ready reference regarding proper handling of CROMMELINS plate compactor.



Spare Parts & Service

Phone: 1300 554 524
Freecall Fax: 1800 636 281

spareparts@crommelins.com.au

www.crommelins.com.au



WA Metro 9350 5588
WA Regional 1800 655 588

East Coast 1300 650 659
email@crommelins.com.au

HINTS ON OPERATION

- During uphill compaction, it may be necessary to swing the handle over and pull the machine slightly.
- When compacting on slopping terrain, the machine may tend to slide sideways. The operator must steer toward the rise causing the machine to travel at an angle.
- When operating the machine in wet or damp soil, it may occasionally be required to clean the bottom of the base plate. Mud accumulation on the base plate will slow the machine down and prevent efficient soil compaction.
- When operating this compactor on asphalt surface, it is recommended that light oil or kerosene be applied to the bottom of the base plate to prevent asphalt sticking and/or accumulation.
- Operating the machine on a fully compacted, hard, or non-yielding surface will cause it to bounce and damage exciter bearings, and will greatly reduce the life of the machine. Reduce engine speed to eliminate bounce.

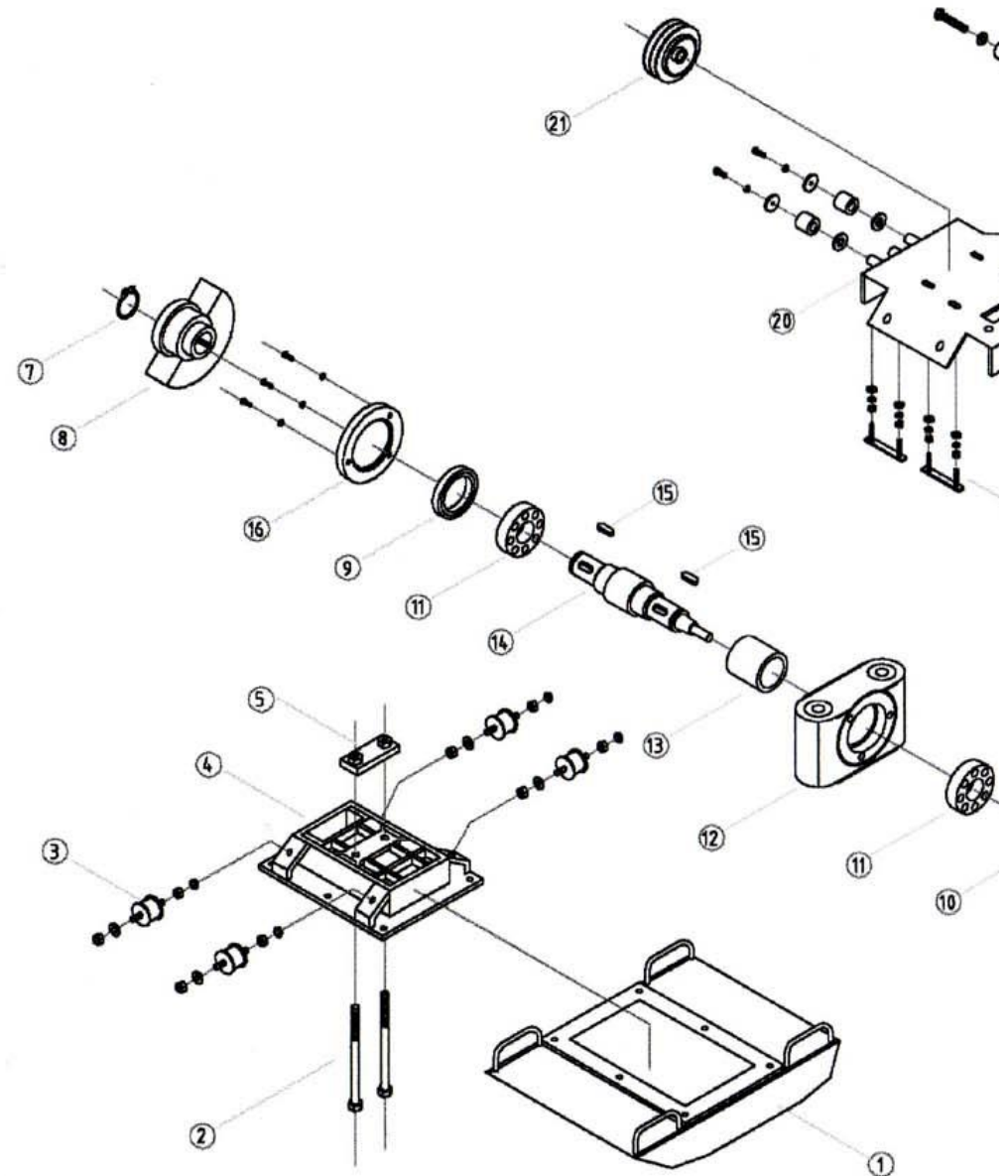
STOPPING THE MACHINE

- IN PREPARATION FOR STOPPING THE ENGINE, LET THE ENGINE RUN IN LOW SPEED POSITION.
- ALLOW THE ENGINE TO IDLE FOR 1-2 MINUTES.
- CLOSE THE FUEL SHUT-OFF VALVE.
- TURN THE ENGINE SWITCH TO "OFF".

WARNING! BE CAREFUL NOT TO TOUCH **HOT** ENGINE PARTS AT THIS TIME.

- AFTER THE ENGINE HAS COOLED, IT IS HIGHLY RECOMMENDED TO WIPE OFF THE MACHINE AND INSPECT OIL SEALS FOR ANY UNUSUAL LEAKAGE FROM THE ENGINE OR ECCENTRIC HOUSING. IT IS ALSO RECOMMENDED THAT THE COVER BE PLACED OVER THE MACHINE AT THIS TIME TO PROVIDE PROTECTION TO THE MACHINE AS WELL AS THE ENGINE.

VIBRATORY PLATE COMPACTOR MODEL - CC70R EXPLODED DRAWING & SPARE PARTS LIST



7. TROUBLESHOOTING

TROUBLE	POSSIBLE CAUSES	COUNTERMEASURE
Engine won't start, or stops suddenly.	No fuel.	Supply the fuel.
	Engine Switch being set to "OFF".	Clean the Engine Switch to "ON".
	Spark Plug being carbonized.	Clean the Spark Plug, or replace it with new one.
	Fuel Strainer being clogged.	Clean the Fuel Strainer.
	Carburettor being clogged.	Dismantle, and clean the carburettor.
Engine runs, but the machine does not produce any vibration.	Air Cleaner Element clogged.	Dismantle the cleaner element, and clean the element with proper solvent. (see the engine manual)
	Lack of Engine Power.	Refer to the Engine Manual.
	Centrifugal Clutch is slipping.	Dismantle the clutch assembly, and clean the Shoe and drum with proper solvent.
	Improper V-Belt Tension, or excessive wear or V-Belt.	Adjust the tension, or replace the belt with new one.
Slow or Irregular Vibration	Centrifugal Clutch is slipping.	Dismantle the clutch assembly, and clean the Shoe and Drum with proper solvent.
	Improper V-Belt tension, or excessive wear of V-Belt.	Adjust the V-Belt tension, or replace the belt with new one.

1. SAFETY PRECAUTION

THIS MANUAL CONTAINS IMPORTANT INFORMATION ON HOW TO USE THE VIBRATORY PLATE COMPACTOR, CC90 PROPERLY AND SAFELY. READ THROUGH THIS MANUAL BEFORE YOU ATTEMPT TO OPERATE THE MACHINE.

2. SPECIFICATIONS

MODEL	CC70R
Base Plate Dimension L x W (mm)	610 x 460
Exciter Speed (rpm)	6500
Travel Speed (m/min)	Up to 20
Grade Ability (Deg)	Up to 35
Centrifugal Force (kN)	18
Min. Compaction Depth (cm)	28
Water Tank Capacity (litre)	-
Engine	EX17D
Engine Type	Air-cooled Gasoline
Max. Output (hp/rpm)	6/4000
Starting System	Recoil
Machine Weight (kg)	82

3. COMPONENTS



4. TRANSPORTATION

- Before transportation, confirm that the fuel shut-off valve is closed.
- Be sure to let the engine cool off before transportation.
- When loading and unloading the machine to and from the vehicle, lift the machine with extreme care. The machine is heavy, and must not be lifted single-handedly. Four lifting handles are provided at each corner of the Base Plate. Lift the machine by two people holding each pair of the handles. Do not attempt to lift the machine by grabbing the Operation Handle.
- Tie the machine firmly to the vehicle during the transportation.

5. STORAGE

- Make sure that the engine is completely cooled off before storage.
- Clean up oil and dust accumulation on rubber parts.
- Clean the base plate and wipe on a light coat of oil to prevent rust formation.
- Cover the machine and store it in a dry place.
- For long-term storage, remove fuel from the fuel tank. Also remove fuel remained in the fuel line and chamber of the carburettor. To drain fuel from the chamber of the carburettor, remove the Drain Plug provided at the chamber, and remove fuel.

6. MAINTENANCE

When assembling, lubricating, or adjusting any part of the machine, make sure to stop the engine and disconnect the spark plug wire. Service the engine according to the engine manufacturer's specifications. Refer to the engine operation and maintenance manual.

Maintenance: Every 8 hours or daily

- Check for loose bolts and nuts, retighten if necessary.
- Check and clean the air filter element, re-lube the element according to engine manufacturer's recommendations. If operating conditions are usually dusty and severe, filter elements cleaning should be done more frequently.
- Check oil level in crankcase and replenish as necessary. Recommended engine oil is SAE 10W-30.

Maintenance: Every 50 hours or weekly

- Check the belt tension by pressing the belts midway between pulleys. The belt should deflect by 10 to 15mm.
- How to adjust the belt tension:
Loosen the bolts, which fix the engine with the engine base. Adjust the belt tension by re-tensioning the belt adjuster bolts. Once proper belt tension is achieved, tighten the bolts.
- When the belt tension cannot be adjusted using the above method, the belt may have been stretched and worn out. Replace the V-Belt. Replace both of two simultaneously.

Maintenance: Every 450 – 500 hours

FUEL & LUBRICANT

FUEL	AUTOMOTIVE GASOLINE
ENGINE OIL	Motor Oil of proper viscosity for 4 stroke gasoline engine

ENGINE CAPACITY	Fuel Tank	Engine Oil	Belt Size
EX17D	3.6 Litres	600cc	A-28