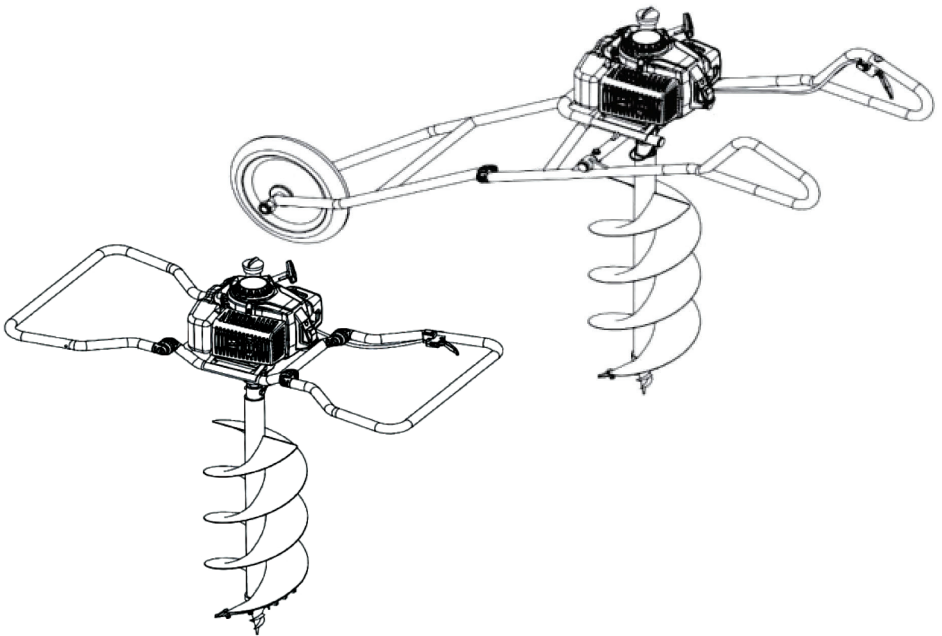




Heavy Duty Earth Augers

OPERATORS MANUAL



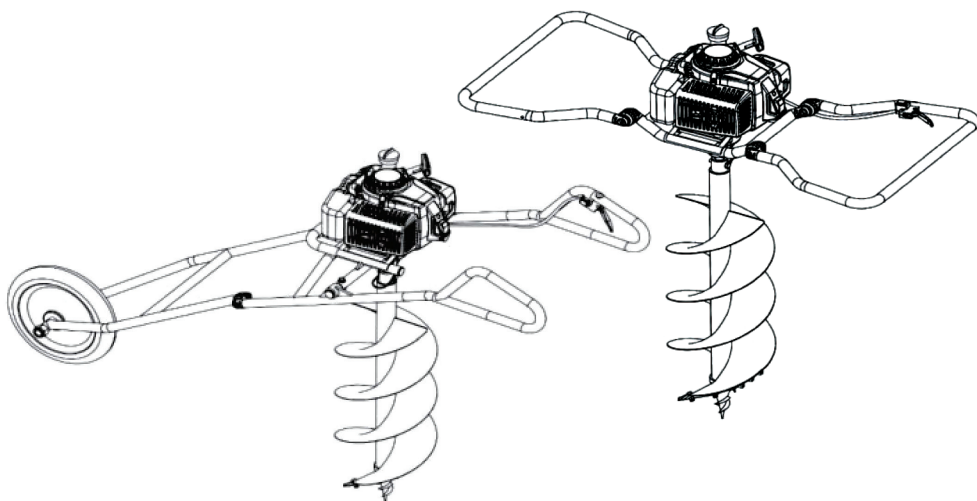
IMPORTANT!

IT IS ESSENTIAL THAT YOU READ THE INSTRUCTIONS IN THIS
MANUAL BEFORE OPERATING THIS MACHINE

Thanks for buying the Bullmax series Earth Auger machine!

Your new tool has been engineered and manufactured to a high standard for dependability, ease of operation, and operator safety. Properly cared for, it will give you years of rugged, trouble-free performance.

For your own safety please read and understand this operator's manual before attempting to operate your Earth auger machine.



WARNING!

To reduce the risk of injury, the user must read and understand the operator's manual.



WARNING!

Do not attempt to operate this earth auger machine until you have read thoroughly and understood completely all instructions, safety rules etc contained in this manual. Failure to comply may result in accidents. Involving fire, electric shock or serious personal injury. Save operator's manual and review frequently for continuing safe operation, and instructing others who may use this tool.

**PLEASE READ ALL THE INSTRUCTIONS
AND FOLLOW WARNINGS**

CONTENTS

1. General safety rules	4-5
2. Specific safety rules for Earth Auger machine use	5
3. Symbols	6
4. Service	7
5. Packing list	7
6. Features / Specifications	7
7. Specifications BMEAFH-H50HD & BMEAW-H50HD	7
8. Assembly	8-9
9. Operation	10-11
10. Maintenance	12-13
11. Installation Diagram – BMEAW-H50HD	14
12. Installation Diagram – BMEAFH-H50HD	15
13. Limited Warranty	16-17
14. Hawk Group Pty Ltd – Defects Warranty Provisions	18

1. GENERAL SAFETY RULES

- For safe operation, read and understand all instructions before using the earth auger machine. Follow all safety instructions. Failure to follow all safety instructions listed below, can result in serious personal injury.
- Do not allow children or untrained individuals to use this unit.
- The power drill must only be used by adults in good physical condition with knowledge of the operating instructions.
- Never start or run the engine in a closed or poorly ventilated area; breathing exhaust fumes can kill.
- Clear the work area before each use. Remove all objects such as rocks, broken glass, nails, wire, or string which can become entangled in the auger.
- Wear protective non-slip safety shoes, gloves, glasses and ear protection while operating this unit.
- Wear heavy long pants. Do not wear loose fitting clothing, short pants, loose jewellery of any kind, or use with bare feet.
- Secure long hair to prevent entanglement in any moving parts.
- Keep all bystanders, children, and pets at least 3m away.
- Do not operate this unit when you are tired, ill, or under the influence of alcohol, drugs, or medication.
- Do not operate in poor lighting.
- Keep firm footing and balance. Do not overreach. Overreaching can result in loss of balance or exposure to hot surfaces.
- Keep all parts of your body away from any moving part.
- Do not touch area around the muffler or cylinder of the earth auger machine, these parts get hot from operation.
- Always stop the engine and remove the spark plug wire before making any adjustments or repairs except for carburetor adjustments.
- Inspect the unit before each use for loose fasteners, damaged components, fuel leaks, etc. Replace any damaged parts before use.
- It has been reported that vibrations from hand-held tools may contribute to a condition called Raynaud's Syndrome in certain individuals. Symptoms may include tingling, numbness and blanching of the fingers, usually apparent upon exposure to cold. Hereditary factors exposure to cold and dampness, diet, smoking and work practices are all thought to contribute to the development of these symptoms. Its presently unknown what, if any vibrations or extent of exposure may contribute to the condition. There are measures that can be taken by the operator to possibly reduce the effects of vibration:
 - a) Keep your body warm in cold weather. When operating the unit wear gloves to keep the hands and wrists warm. Its reported that cold weather is a major factor contributing to Raynaud's Syndrome.
 - b) After each period of operation, exercise to increase blood circulation.
 - c) Take frequent work breaks. Limit the amount of exposure per day.If you experience any of the symptoms of this condition, immediately discontinue use and see your physician about these symptoms.










- Keep the tool well maintained, fasteners tightened and worn parts replaced.
- Store fuel in a container approved for fuel.
- Move 9m away from refueling site before starting engine.
- Stop the engine and allow to cool before refueling or storing the unit.
- Allow the engine to cool; empty the fuel tank and secure the unit from moving before transporting in a vehicle.

2. SPECIFIC SAFETY RULES FOR EARTH AUGER MACHINE USE




- Replace augers if cracked, bent, or damaged in anyway. Be sure the auger and or extension shaft is properly installed and securely fastened. Failure to do so can cause serious injury.
- Make sure all guards, straps, deflectors and handles are properly and securely attached.
- Do not start working until you have a clear work area. Do not work near electric cables or underground utilities. It is highly recommended that you check with local authorities before starting to drill.
- If auger turns whilst the engine is idling, stop the engine and immediately adjust the idle settings following the instructions in the Honda User Manual.
- Use only the manufacturer's replacement augers on this unit. Do not use any other attachments.
- Replace the bit immediately if any cracks or other damage are present.
- Maintain a firm grip on both handles during operation.
- Never use the drill with the handles above waist level. Drilling with the units handles above waist level restricts control and can cause serious chest injuries if a hand object is struck.
- Never carry the power drill with the engine running.
- Carry the power drill with the engine stopped, and with the auger bit removed.
- Never drill in a horizontal angle. This drill should only be operated with the auger at a 90° angle to the ground.
- Always keep the handles dry and clean.
- Before starting to drill make sure the bit is not obstructed.
- Always work in a firm-footed and safe position.
- Never touch the auger bit or carry out maintenance with the engine running.
- Grip the earth auger machine firmly with both hands and keep all parts of the routine maintenance. For other repairs, have the earth auger machine serviced by an authorised repair.
- Store the power drill off the ground in a vertical position in a dry place and with fuel tank empty.
- If the auger bit jams, stop the engine immediately.

3. SYMBOLS

IMPORTANT: Some of the following symbols may be used on your tool. Please study them and learn their meaning. Proper interpretation of these symbols will allow you to operate the tool better and safer.

SYMBOL NAME	EXPLANATION
 Safety alert symbol	Indicates danger, warning or caution. It means attention!!! Your safety is involved.
 Read your operators manual	Your manual contains special messages to bring attention to potential safety concerns as well as operating and serving information. Please read all the information carefully to ensure satisfaction and safe use.
 Eye and hearing protection	Wear eye and hearing protection when operating this equipment.
 Keep bystanders away	Keep all bystanders at least 3m away.
 Boots	Wear non-slip safety footwear when using this equipment.
 Gloves	Wear non-slip, heavy-duty gloves.
 No smoking	Do not smoke when filling fuel tank.
 Petrol	Use unleaded petrol intended for motor vehicle
 Switch	On/Off Switch I = ON to run O = OFF to stop

The following signal words and meanings are intended to explain the levels of risk associated with this product.

SYMBOL NAME	EXPLANATION
 Danger	Indicates an imminently hazardous situation, which, if not avoided, will result in death or serious injury.
 Warning	Indicates a potentially hazardous situation, which, if not avoided, could result in death or serious injury.
 Caution	Indicates a potentially hazardous situation, which, if not avoided, may result in minor or moderate injury.
	(Without Safety Alert Symbol) Indicates a situation that may result in property damage.

4. SERVICE

Services requires extreme care and knowledge and should be performed only by a qualified service technician. For service we suggest you return the product to your nearest authorised service centre for repair. When servicing, use only identical replacement parts.

WARNING!

To avoid serious personal injury, do not attempt to use this product until you read thoroughly and understand completely the operator's manual. Save this operator's manual and review frequently for continuing safe operation and instructing others who may use this product.

5. PACKING LIST

1 x Tools kits assy	1 x Funnel
1 x Fuel Mixture Bottle	1 x Operators Manual

6. FEATURES / SPECIFICATIONS

KNOW YOUR EARTH AUGER MACHINE

The safe use of this product requires an understanding of the information on the product and in this operator's manual as well as a knowledge of the product you are attempting. Before use of this product, familiarise yourself with all operating features and safety rules.

7. SPECIFICATIONS BMEAFH-H50HD & BMEAW-H50HD

Model: BMEAFH-H50HD
Heavy Duty 2 Person Folding Handle Earth Auger
Type: Honda GX50 Air cooled 4 stroke engine
Total displacement: 47.9cc
Horsepower: 2HP
Fuel: Unleaded
Fuel tank volume: 0.63L
Max drive ability: Auger bit $\phi \leq 200\text{mm}$
Clutch engagement speed: $3900 \pm 300\text{rpm}$
Idle speed: $2800 \pm 300\text{rpm}$
Power: 1.47kw / 7000rpm
Gearbox ratio: 30:1

Model: BMEAW-H50HD
Heavy Duty Wheeled Earth Auger
Type: Honda GX50 Air cooled 4 stroke engine
Total displacement: 47.9cc
Horsepower: 2HP
Fuel: Unleaded
Fuel tank volume: 0.63L
Max drive ability: Auger bit $\phi \leq 200\text{mm}$
Clutch engagement speed: $3900 \pm 300\text{rpm}$
Idle speed: $2800 \pm 300\text{rpm}$
Power: 1.47kw / 7000rpm
Gearbox ratio: 30:1

Specifications are subject to change without notice.

8. ASSEMBLY

UNPACKING

- Carefully remove the tool and any accessories from the box. Make sure that all items listed in the packing list are included.
- Inspect the tool carefully to make sure no breakage or damage occurred during shipping.
- Do not discard the packing material until you have carefully inspected and satisfactorily operated the tool.



WARNING!

If any parts are missing do not operate this tool until the missing parts are replaced. Failure to do so could result in possible serious injury.



WARNING!

Do not attempt to modify this tool or create accessories not recommended for use with this tool. Any such attention or modification is misuse and could result in a hazardous condition leading to possible serious personal injury.

FITTING THE AUGER BITS

Align the engine drive shaft into the seat on the auger bit and secure it using the appropriate fixing pin.

DRIVESHAFT

The driveshaft is connected to the attachments to transfer movement.

ENGINE SWITCH

The engine switch is used in combination with the recoil starter grip to start the engine. It is also used to turn the engine off.

GEARBOX

The gearbox transfers the engines RPM to a slower high torque output.

Gear wheel material : 20CrMnTi;

Gear wheel structure : Helical (rounded corner);

Main gear wheel contact with output shaft : Spline

THROTTLE LOCK

The throttle lock is used to help the engine on cold starts

THROTTLE TRIGGER

The throttle trigger helps the operator control the speed of the auger to suit various ground conditions.

TRIGGER LOCK

The trigger lock prevents the operator from accidentally activating the throttle trigger. The trigger lock must be depressed before applying the throttle.

NOTE: Your two person folding handle earth auger machine can use the extension shaft which can be used for deeper hole digging. Do not start digging a hole with the extension attached. The hole should always be started with auger bit only fitted. Once the hole is deep enough and the operator handles are at least 500mm below waist level, stop the unit and attach the extension shaft between the power head and the auger for added comfort and deeper hole depth.



WARNING!

Never use the drill with the handles above waist level. Drilling with the units handles above waist level restricts control and can cause serious chest injuries if a hard object is struck.



WARNING!

Do not change the ratio of the reduction gearbox. The characteristics of the machine could change and unforeseen reactions could occur.

WORKING RULES



WARNING!

Always follow the safety rules. The earth auger machine must only be used to drill ground. Do not lock the power drill onto fixed supports. It is forbidden to apply tools or applications other than the ones indicated and approved by the manufacturer.

9. OPERATION

WARNING!

Do not allow familiarity with tools to make you careless. Remember that a careless fraction of a second is sufficient to inflict serious injury.

EAR PROTECTION

WARNING!

Always wear safety goggles or safety glasses with side shields when operating this tool. Failure to do so could result in objects being thrown into your eyes resulting in personal injury.

WARNING!

Do not use any attachments or accessories not recommended by the manufacturer of this tool. The use of attachments or accessories not recommended can result in personal injury.



NOTE: Read the operators manual and follow warnings and safety instructions.



NOTE: Keep all bystanders, especially children and pets, at least 3m from the operating area.

FUEL AND REFUELING SAFETY

- Always handle fuel with care, its highly flammable.
- Always refuel outdoors where there are no sparks and flames. Do not inhale fuel vapors.
- Do not let petrol and oil come in contact with your skin.
- Keep petrol and oil away from the eyes. If petrol or oil comes in contact with eyes, wash them immediately with clean water. If irritation is still present, see a doctor immediately.
- Clean up spilled petrol immediately.

FILLING THE TANK

- Clean surface around fuel cap to prevent contamination.
- Loosen fuel cap slowly to release pressure and to keep fuel from escaping around the cap.
- Carefully pour fuel into the tank. Avoid spillage.
- Prior to replacing the fuel cap, clean and inspect the gasket.
- Immediately replace fuel cap and hard tighten.
- Wipe up any fuel spillage. Move 9m away from refueling site before starting engine.

NOTE: It is normal for smoke to be emitted from a new engine during and after first use.

WARNING!

Always shut off engine before fueling. Never add fuel to a machine with a running or hot engine. Move at least 9m from refueling site before starting engine. Do not smoke!

STARTING AND STOPPING



WARNING!

Never start or run the engine inside a closed or poorly ventilated area; breathing exhaust fumes can kill.



WARNING!

Do not have the auger bit attached when starting a cold engine. The auger bit may rotate when the engine starts with the throttle lock engaged. Start the engine following the procedure below. Allow the engine to warm up. With the engine warm, you may stop the engine, fit the auger bit and re-start the engine following the warm start procedure.

NOTE: Be sure to return the stop switch to the “I” position before trying to start unit.

TO START A COLD ENGINE – Refer to Honda User Manual.

TO START A WARM ENGINE

With the engine switch on “I” positions PULL the starter rope with a quick firm and consistent upward motion until the engine starts.

TO STOP THE ENGINE

Press the engine switch to the “O” position. Wait until the engine stop.

OPERATING THE EARTH AUGER MACHINE

- Grip the power drill firmly with both hands and keep all parts of the body from the auger bit and muffler.
- Hold the earth auger machine in front of you with the right hand firmly gripping on the throttle handle and your left hand firmly gripping the other.
- Always keep a firm grip with both hands while in operation.
- The earth auger machine should be held at a comfortable position with the handle height no higher than waist level.
- The throttle trigger helps control the speed of the auger to suit various ground conditions.
- Keep a comfortable distance between yourself and the drill without overreaching.
- Always pay full attention to your operation serious injuries may result if contact is made with the rotating auger.



WARNING!

Never use the drill with the handles above waist level. Drilling with the units handles above waist level restricts control and can cause serious chest injuries if a hard object is struck.

10. MAINTENANCE

WARNING!

Do not allow familiarity with tools to make you careless. Remember that a careless fraction of a second is sufficient to inflict serious injury.

- You may make adjustments and repairs described here. For other repairs, have the earth auger machine serviced by an authorised service agent.
- Consequences of improper maintenance may include excess carbon deposits resulting in loss of performance and discharge of black oily residue dripping from the muffler.
- Make sure all guards, deflectors and handles are properly and securely attached to avoid the risk of personal injury.

REDUCTION GEARBOX

Every 100 working hours change the grease in the reduction gearbox.

LUBRICANT FOR REDUCTION GEARBOX

The earth auger machine is supplied with Tamol Tamlith 2 grease in the reduction gearbox the lubrication in the reduction gearbox should be checked periodically. To check the lubrication condition and level remove the screw under the reduction gearbox.

SUITABLE GEARBOX GREASE

- Bullmax PDGR
- Shell L/EPO
- Tamol Tamlith 2 grease
- Must be a Lithium soap based grease, semi fluid with a temperature range of -30°C to 130°C.

CLEANING AIR FILTER – Refer to Honda User Manual.

SPARK PLUG REPLACEMENT – Refer to Honda User Manual.

IDLE SPEED ADJUSTMENT – Refer to Honda User Manual.

STORING THE PRODUCT

- Clean all foreign material from the product. Store idle unit indoors in a dry, well-ventilated area that is inaccessible to children. Keep away from corrosive agents such as garden chemicals.
- Abide by all local regulations for the safe storage and handling of petrol.

WHEN STORING FOR 1 MONTH OR LONGER

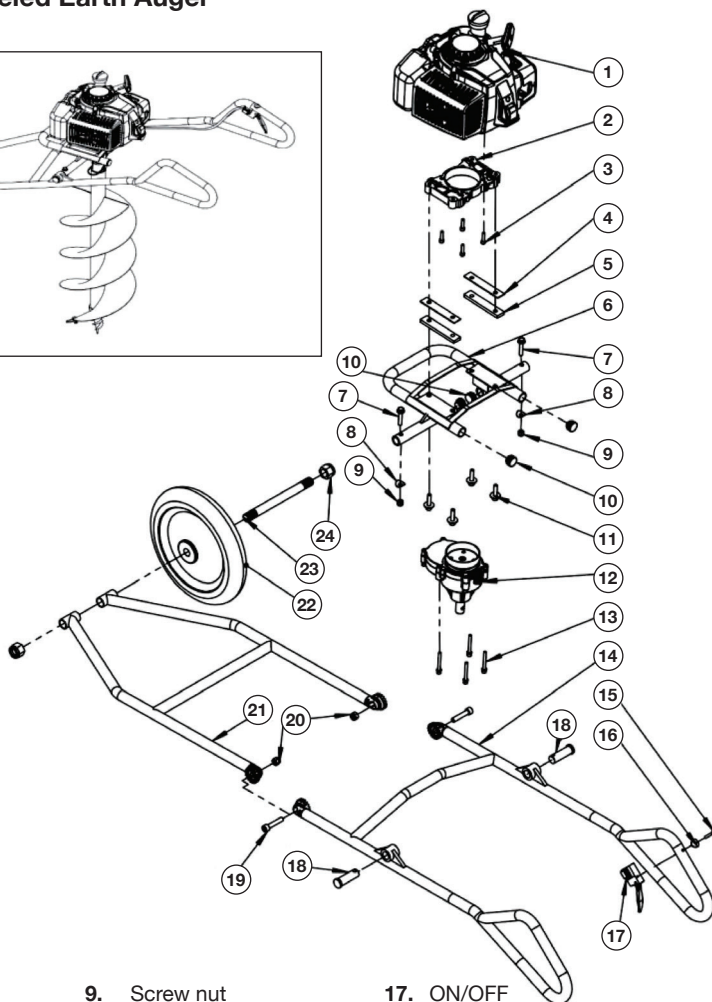
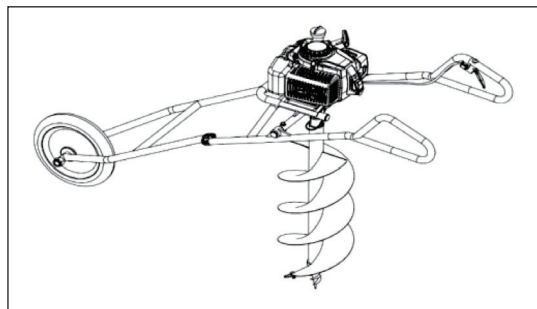
Drain all fuel from tank into a container approved for petrol. Run engine until it stops.

PROBLEM	POSSIBLE CAUSE	SOLUTION
Engine will not start		Refer to Honda User Manual
Engine starts but will not accelerate		Refer to Honda User Manual
Engine starts but will only run at high speed at half choke		Contact a servicing dealer
Engine does not reach full speed and emits excessive smoke		Refer to Honda User Manual
Engine starts, runs, and accelerates but will not idle		Refer to Honda User Manual
The auger attachment turns at idle	Idle speed is set too high. Gearbox clutch is inoperable	Turn the idle speed screw control counter clockwise to reduce the idle RPM and stop the auger attachment. Contact a service dealer for adjustment and discontinue use until the repair is made. Serious personal injury may result from the auger attachment turning at idle.

If these solutions do not solve the problem, contact your authorised service dealer.

11. INSTALLATION DIAGRAM – BMEAW-H50HD

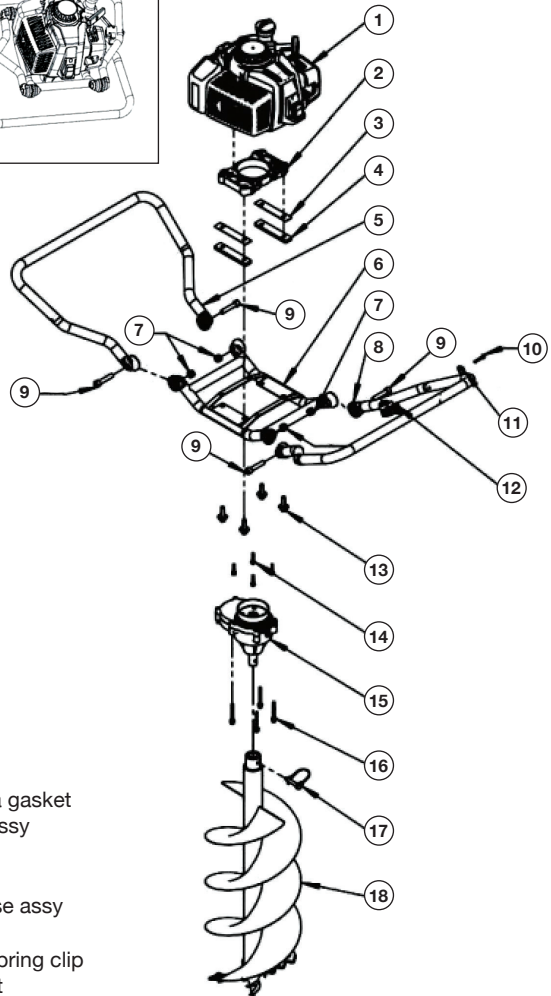
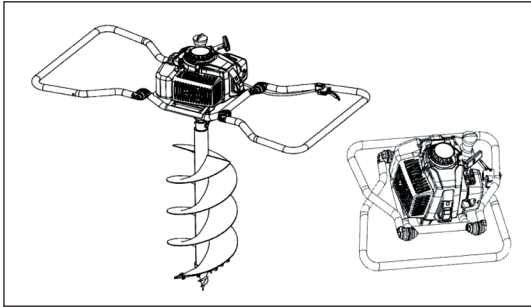
Heavy Duty Wheeled Earth Auger



- | | | |
|-------------------------|---------------------------|---------------------|
| 1. Engine | 9. Screw nut | 17. ON/OFF |
| 2. Contactor plate | 10. Plastic plug | 18. Fixed pin |
| 3. Screw | 11. Plastic plug | 19. Screw |
| 4. Metal AVS | 12. Gear case assy | 20. Screw nut |
| 5. Rubber AVS | 13. Screw | 21. Auxiliary stand |
| 6. Gear case main frame | 14. Handle & trigger assy | 22. Wheel |
| 7. Screw | 15. Screw | 23. Wheel shaft |
| 8. Umbrella gasket | 16. Umbrella gasket | 24. Screw nut |

12. INSTALLATION DIAGRAM – BMEAFH-H50HD

Heavy Duty 2 Person Folding Handle Earth Auger



- | | |
|--------------------|------------------------|
| 1. Engine assy | 10. Screw |
| 2. Contactor | 11. Umbrella gasket |
| 3. Metal AVS | 12. On/Off assy |
| 4. Rubber AVS | 13. Screw |
| 5. Right handle | 14. Screw |
| 6. Gear case shelf | 15. Gear case assy |
| 7. Screw nut | 16. Screw |
| 8. Left handle | 17. D type spring clip |
| 9. Screw | 18. Auger bit |

13. LIMITED WARRANTY (ORIGINAL INSTRUCTIONS)

Warrant this outdoor product to be free of defects in material and workmanship for 24 months from the date of purchase by the original purchaser, subject to the limitations below. Please keep your invoice as proof of date of purchase.

- **This warranty is only applicable where the product is used for personal and non-Commercial purposes.**

This warranty does not cover damage or liability caused by due to misuse, abuse, accidental or intentional acts by user, improper handling, unreasonable use, negligence, failure by end user to follow operating procedures outlined in the user's manual, attempted repair by a non-qualified professional, unauthorised repair, modification, or use of accessories and/or attachments not specially recommend by authorized party. Please see your local dealer for list of authorised service centres in your area.

- This warranty does not cover belts, brushes, bags, bulbs or any part which ordinary wear and tear results in required replacement during warranty period. This warranty does not cover transportation cost or consumable items such as fuses and batteries.
- This limited warranty is void if the product's original identification (trademark, serial number, etc.) Markings have been defaced, altered or removed or if product is not purchased from an authorised reseller .
- Where permitted, the provisions of this limited warranty are in lieu of any other written warranty, whether express or implied, written or oral, including any warranty of MERCHANTABILITY OR FITNESS FOR A PARTICULAR PURPOSE. IN NO EVENT SHALL WE BE LIABLE FOR SPECIAL, INCIDENTAL, CONSEQUENTIAL OR INCIDENTAL DAMAGES. OUR MAXIMUM LIABILITY SHALL NOT EXCEED THE ACTUAL PURCHASE PRICE PAID BY YOU FOR THE PRODUCT.

ENGINE

Genuine Honda 3 yr warranty. Refer to Honda warranty terms and conditions.

GEARBOX AND AUGER ASSY

This product is warranted by Bullmaxx to the original purchaser, to be free from defects in material and workmanship under normal use for a period of 12 months from the date of purchase. During the warranty period, and upon proof of purchase, the product will be repaired or replaced (with the same or similar model at the manufacturers option), without charge for either parts or labour. In case of defect please contact the dealer where you originally purchased this product.

The warranty will not apply to this product if it has been misused, abused or altered in any way. Without limiting the foregoing, damaging cause by dropping the machine, bent parts or evidence of wrong fuel are presumed to be defects resulting from misuse or abuse.

EXEMPTIONS FROM RESPONSIBILITY

This product is warranted by the manufacturer to the original purchaser, to be free from defects in material and workmanship under normal use for a period of 12 months from the date of purchase. During the warranty period, and upon proof of purchase, the product will be repaired or replaced (with the same or similar model at the manufacturers option), without charge for either parts or labour. In case of defect please contact the dealer where you originally purchased this product.

The manufacturer or his representatives, assume no responsibility for any direct or indirect consequential damage or loss of profits by any disaster (earthquake, storm, flood, fire...), accident or an act of any third party and / or a usage in any other but the usual conditions.

The manufacturer or his representatives, assume no responsibility for any direct or indirect consequential damage or loss of profits caused by usage other than explained in the Owner's Manual.

The manufacturer or his representatives, assume no responsibility for any direct or indirect consequential damage or loss of profits caused by usage other than explained in the Owner's Manual.

The manufacturer or his representatives, assume no responsibility for any direct or indirect consequential damage caused by the machine impacting against other products.

WARRANTY DOESN'T EXTEND TO THE FOLLOWING CASES:

1. If the serial number has been tampered with, removed or changed.
2. The cost of maintaining the machine, servicing and normal wear & tear.
3. If the machine has been modified or altered to enhance performance or attempting to make the machine perform work other than that described in the Owner's Manual.
4. If major service has been carried out by anyone other than an authorised service centre.
Warranty will cease from the time unauthorised repairs are carried out.
5. Damage caused by misuse, operator error or negligence.
6. Damage caused by use of improper fuel.
7. Acts of God and/or actions of a third party.

PLEASE READ THE FOLLOWING CAREFULLY

THE MANUFACTURER AND/OR DISTRIBUTOR HAS PROVIDED THE PARTS LIST AND ASSEMBLY DIAGRAM IN THIS MANUAL AS A REFERENCE TOOL ONLY. NEITHER THE MANUFACTURER NOR DISTRIBUTOR MAKES ANY REPRESENTATIONS OR WARRANTY OF ANY KIND TO THE BUYER THAT HE OR SHE IS QUALIFIED TO MAKE ANY REPAIRS TO THE PRODUCT, OR THAT HE OR SHE IS QUALIFIED TO REPLACE ANY PARTS OF THE PRODUCT. IN FACT, THE MANUFACTURER AND/OR DISTRIBUTOR EXPRESSLY STATES THAT ALL REPAIRS AND PARTS REPLACEMENTS SHOULD BE UNDERTAKEN BY CERTIFIED AND LICENSED TECHNICIANS, AND NOT BY THE BUYER. THE BUYER ASSUMES ALL RISK AND LIABILITY ARISING OUT OF HIS OR HER REPAIRS TO THE ORIGINAL PRODUCT OR REPLACEMENT PARTS THERETO, OR ARISING OUT OF HIS OR HER INSTALLATION OF THE REPLACEMENT PARTS THERETO.

Record Engine Serial Number here: _____

Record Product's Serial Number here: _____

NOTE: If the product has no serial number, record month and year of purchase instead.

NOTE: Some parts are listed and shown for illustration purposes only, are not available individually as replacement parts.

For all enquiries email info@bullmax.com.au

14. HAWK GROUP PTY LTD – DEFECTS WARRANTY PROVISIONS

1. Length of Coverage

Hawk Group warrants to a first retail purchaser that the gear box and auger assy is free from defects in materials and workmanship that cause the failure of warranted parts for a period of one year after the date of delivery to the first retail purchaser.

2. No Charge Repair or Replacement

Repair or replacement of any warranted part will be performed at no charge to the owner if the work is performed through a warranty station authorised by Hawk Group.

3. Consequential Damages Coverage

Coverage under this warranty shall also extend to the failure of any gear box components caused by the failure of any warranted part while it is still covered under this warranty.

4. Coverage Exclusions

Warranty claims shall be filed in accordance with the provisions of the Hawk Group warranty policy **explained in the box at the top of the previous page**. Hawk group shall not be liable for any loss of use for any alternative usage, for any damage to goods, loss of time, or inconvenience.

Warranty coverage shall also be excluded for any part which fails, malfunctions, or is damaged due to failure to follow the maintenance and operating instructions set forth in the Owner's Manual including, but not limited to:

- a) Use of parts which are not authorised by Hawk Group
- b) Improper installation, adjustment or repair of the engine or of any warranted part unless performed by an authorised warranty centre
- c) Failure to follow recommendations on fuel use contained on the Owner's Manual
- d) Improper or inadequate maintenance of any warranted parts
- e) Repairs performed outside of the authorised warranty service dealers
- f) Alterations by changing, adding to or removing parts from the engine.

5. Service and Maintenance

Component parts which are not scheduled for replacement as required maintenance or are scheduled only for regular inspection to the effect of "repair or replace as necessary" are warranted for the warranty period. Any warranted part which is scheduled for the replacement as required maintenance is warranted for the period of time up to the first scheduled replacement point for that part. Any replacement part, provided it is equivalent in durability and performance, may be used in performance maintenance or repairs. The owner is responsible for commissioning a qualified authorised technician/mechanic or authorised Honda Repair Centre to perform all required maintenance, **as outlined in the Inspection, Cleaning and Maintenance section in this manual and in the Honda User Manual**.



Hawk Group. PO Box 150 Southgate Sylvania NSW 2224

www.bullmax.com.au