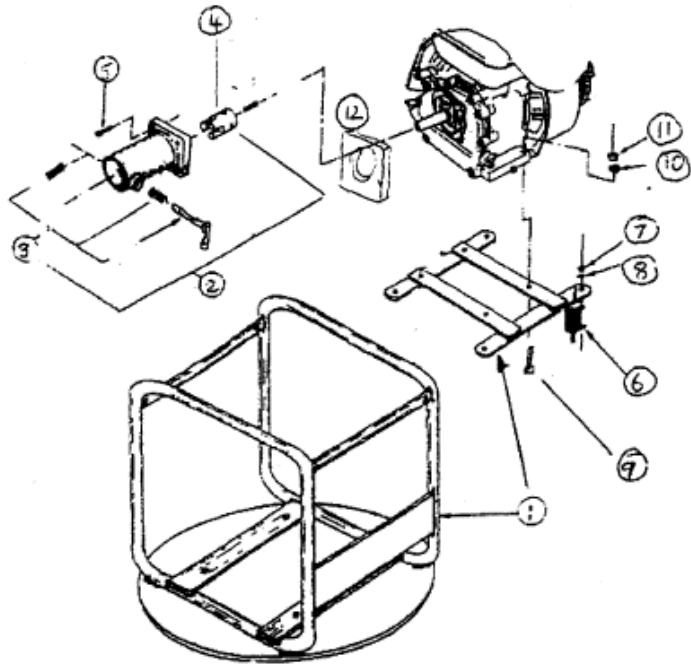


## DU53 DRIVE UNIT



REF	PART NO.	DESC	QTY
1	DU530100	BASE & H-PLATE SET	1
2	DU530200	BELL HOUSING AND DRIVE DOG SE	1
3	> DU530210	LATCH PIN ASSEMBLY	1
4	> DU530320	3 DOG COUPLING 20MM	1
5	8X30SH	SCREWS 8 X30	4
6	4504000500	RUBBER MOUNTS	4
7	3049	HEX ZP NUT 10	8
8	3714	WASHER S10	8
9	8X50	BOLTS	4
10	14408	WASHER 8S	8
11	3048	NUT 8	4
<b>OPTIONAL PARTS</b>			
4	> DU530310	3 DOG COUPLING 1 "	10
4	> DU530319	3 DOG COUPLING 19mm	10
4	> DU530325	3 DOG COUPLING 25MM	10
12	> DU53W	BELL HOUSING SPACER 8MM (DIESELS)	10

**CROMMELINS™**  
MACHINERY

## CROMMELINS DRIVE UNIT MODEL – DU53/DU53D

### OPERATION & INSTRUCTION MANUAL

Thank you for your selection of a **CROMMELINS™** drive unit.

This Operation Manual explains its use, installation, checking and maintenance. **CROMMELINS** suggest that you retain this manual for ready reference regarding proper handling of **CROMMELINS™** drive unit.



#### Spare Parts & Service

Phone: 1300 554 524  
Freecall Fax: 1800 636 281

[spareparts@crommelins.com.au](mailto:spareparts@crommelins.com.au)

[www.crommelins.com.au](http://www.crommelins.com.au)



WA Metro 9350 5588  
WA Regional 1800 655 588

East Coast 1300 650 659  
email@crommelins.com.au

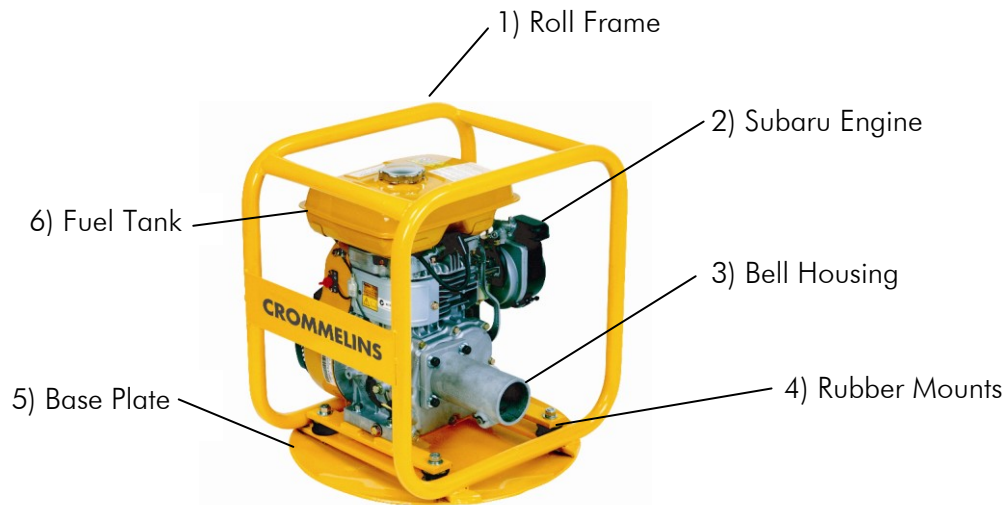
## 1. SAFETY PRECAUTION

This manual contains important information on how to use the Drive Unit DU53 properly and safely. Please read through this manual before you attempt to operate the machine.

## 2. SPECIFICATIONS

MODEL	DU53	DU53D
Dimensions L x W x H (mm)	510x510x580mm	510x510x580mm
Drives Vibrators	Up to 65mm	Up to 65mm
Drives Pumps	Up to 50mm	Up to 50mm
Fuel Type	Petrol	Diesel
Fuel Tank Capacity (litres)	3.8L	3.2L
Engine	5.0hp EY20D	5.4hp DY272D
Engine Type	Air-cooled, 4 cycle	Air-cooled, 4 cycle
Max. Output (hp/rpm)	5.0/4000	4.5/3000
Starting System	Recoil	Recoil
Machine Weight (kg)	32	49

## 3. COMPONENTS



## 14. TROUBLESHOOTING

TROUBLE	POSSIBLE CAUSES	REMEDY
Engine won't start, or stops suddenly.	No fuel.	Supply the fuel.
	Engine Switch being set to "OFF".	Switch to "ON".
	Spark Plug being carbonized.	Clean the Spark Plug, or replace it with new one.
	Fuel Strainer being clogged.	Clean the Fuel Strainer.
	Carburettor being clogged.	Drain and clean the carburettor float bowl.
Engine runs, but the machine does not produce any vibration.	Air Cleaner Element clogged.	Dismantle the cleaner element, and clean the element with proper solvent. (see the engine manual)
	Lack of Engine Power.	Refer to the Engine Manual.
	Improper V-Belt Tension, or excessive wear or V-Belt.	Adjust the tension, or replace the belt with new one.
Slow or Irregular Vibration	Centrifugal Clutch is slipping.	Dismantle the clutch assembly, and clean the Shoe and Drum with proper solvent.
	Improper V-Belt tension, or excessive wear of V-Belt.	Adjust the V-Belt tension, or replace the belt with new one.

### 13. MAINTENANCE

When assembling, lubricating, or adjusting any part of the machine, make sure to stop the engine and disconnect the spark plug wire. Service the engine according to the engine manufacturer's specifications. Refer to the engine operation and maintenance manual.

#### **Maintenance: Every 8 hours or daily**

- Check for loose bolts and nuts, retighten if necessary.
- Check and clean the air filter element, re-lube the element according to engine manufacturer's recommendations. If operating conditions are usually dusty and severe, filter elements cleaning should be done more frequently.
- Check oil level in crankcase and replenish as necessary. Recommended engine oil is SAE-30.

#### **Maintenance: Every 450 – 500 hours**

#### **FUEL & LUBRICANT**

FUEL	AUTOMOTIVE GASOLINE
ENGINE OIL	SAE30 Engine Oil

ENGINE CAPACITY	Fuel Tank	Engine Oil	Spark Plug
EY20D	3.8 Litres	0.6 Litres	NGK B6HS
DY272D	3.2 Litres	0.9 Litres	-

### 4. CONNECTING DRIVE PUMP OR VIBRATOR SHAFT

- Ensure that the connecting end is securely engaged and properly latched into the drive unit.

### 5. BEFORE STARTING

- Check the engine in accordance with operation manual for engine.
- Check fuel and engine oil.
- Check bolts and screws for tightness and make sure all bolts and screws are securely tightened. Loose bolts and screws may cause damage to the unit.

### 6. STARTING

- Open fuel cock.
- Set the speed control lever to the starting position.
- Close the choke lever of the carburettor (leave the choke lever half-open position during warming up the engine – petrol engine only).
- Pull the recoil starter strongly.
- After the engine has started open the choke lever fully and warm up the engine for 2-3 minutes in the low speed position.

### 7. OPERATION

- Take care not to over-speed the flexible shaft or damage could result.

## **8. STOPPING THE MACHINE**

- Operate the machine 1-2 minutes with the throttle lever setting back to the low speed position.
- Turn the ignition switch to "OFF" for petrol unit. Press STOP lever for diesel unit.
- Close the fuel cock.
- After the engine has cooled, it is highly recommended to wipe off the machine and inspect oil seals for any unusual leakage from the engine.
- It is also recommended that a cover be placed over the machine once cooled, to provide protection to the machine as well as the engine.

## **9. SAFETY**

**Ensure safe operation, this drive unit is designed to give safe and dependable service if operated according to the instructions.**

- Always make a pre-operation inspection before starting the engine. (For more information read engine operational manual)
- Do not place flammable objects near the unit.
- Children and pets must keep away from the area of operation at all times.
- Never allow anyone to operate the unit without proper instructions.
- Must know how to stop the engine quickly and understand all the operation of controls.
- Be careful with the operating place and ventilation, avoid operating the machine in a closed room, tunnel, or other badly ventilated places, since its exhaust contains deadly poisonous carbon monoxide. If the machine is unavoidably operated in such a place, discharge the exhaust outside the room by a suitable means.
- Mufflers and other hot parts are dangerous. Do not touch them with hands or any other body parts.
- Observe the following cautions when transporting. Clamp fuel tank cap securely, and close fuel strainer cock tightly during transportation. Drain gasoline from fuel tank before transporting over a long distance or on rough roads.
- Stop engine without fail before replenishing fuel tank. Never replenish gasoline while the engine is running or remains hot otherwise spilled or evaporated fuel is liable to catch fire from the engine spark or muffler heat. Wipe off spilled fuel before starting engine.

## **11. TRANSPORTATION**

- Before transportation, confirm that the fuel shut-off valve is closed.
- Be sure to let the engine cool off before transportation.
- When loading and unloading the machine to and from the vehicle, lift the machine with extreme care. The machine is heavy, and must not be lifted single-handedly. Lift the machine by two people holding each side of roll frame.
- Tie the machine firmly to the vehicle during the transportation.

## **12. STORAGE**

- Make sure that the engine is completely cooled off before storage.
- Clean up oil and dust accumulation on rubber parts.
- Remove flexible drive pump or vibrator shaft before storage.
- Cover the machine and store it in a dry place.
- For long-term storage of petrol unit, remove fuel from the fuel tank. Also remove fuel remained in the fuel line and chamber of the carburettor. To drain fuel from the chamber of the carburettor, remove the drain plug provided at the chamber, and remove fuel.